

EUGENE & SHARON CISNEROS



As teenagers, Sharon and I were both already interested in minerals and had small collections when we first met in high school. Since money was always an issue, our collections could only be augmented with what we could self-collect. This soon became a passion and eventually developed into commercial field collecting, which helped to fund my first years in college.

In 1966, mentored by our friend Walt Lidstrom, we formed Mineralogical Research Company, a purveyor of mineral specimens, supplies and optical equipment. Concurrently, while Sharon worked to develop the business, I was employed as an electrical engineer at the Stanford Linear Accelerator Center (SLAC) National Accelerator Laboratory. In 2003, after 38 years of service, I retired from my position as a Project Manager and Head of the Instrumentation and Controls Section. My new-found freedom now allows Sharon and I continue to operate the business, and to pursue our mineralogical interests together. My current interest has turned to microminerals and photomicrography, while Sharon continues to curate and add to her thumbnail size mineral collection of over 2,500 specimens. We also enjoy the camaraderie of our mineral collector friends and are members of the Bay Area Mineralogists, Northern California Mineralogical Association, Mineralogical Society of America, Friends of Mineralogy and the Fluorescent Mineral Society.



**Azurite, 5 cm, from the Shilu mine, Yangchun County, Guangdong Province, China.
Eugene and Sharon Cisneros photo.**

**Rhodochrosite, 3.3 cm, from the Emma mine, Butte, Silver Bow County, Montana.
Eugene and Sharon Cisneros photo.**



Rhodochrosite, 3 cm, from the N'Chwaning mines, Kuruman, Kalahari Manganese Field, Northern Cape Province, South Africa. Eugene and Sharon Cisneros photo.



Gold, 2.3 cm, from Mina Zapata, Zapata Gold Field, Santa Elena de Uairen, Bolivar, Venezuela. Eugene and Sharon Cisneros photo.



Cerussite (two V-twins), 4.3 cm, from the 79 mine, near Hayden, Banner District, Gila County, Arizona. Eugene and Sharon Cisneros photo.



Proustite, 5 cm, from the Freiberg District, Erzgebirge, Saxony, Germany. Eugene and Sharon Cisneros photo.



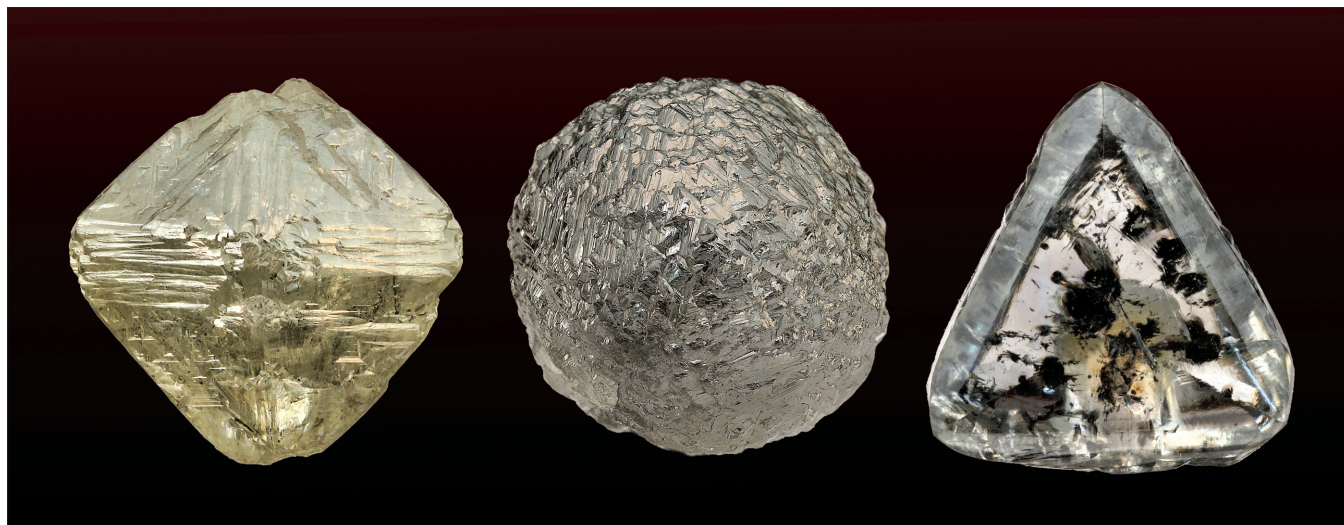
Silver, 5.8 cm, from Aspen, Pitkin County, Colorado. Eugene and Sharon Cisneros photo.



Silver, 10.5 cm, from Aspen, Pitkin County, Colorado. Eugene and Sharon Cisneros photo.



Proustite, 4 cm, from the Schneeberg District, Erzgebirge, Saxony, Germany. Eugene and Sharon Cisneros photo.



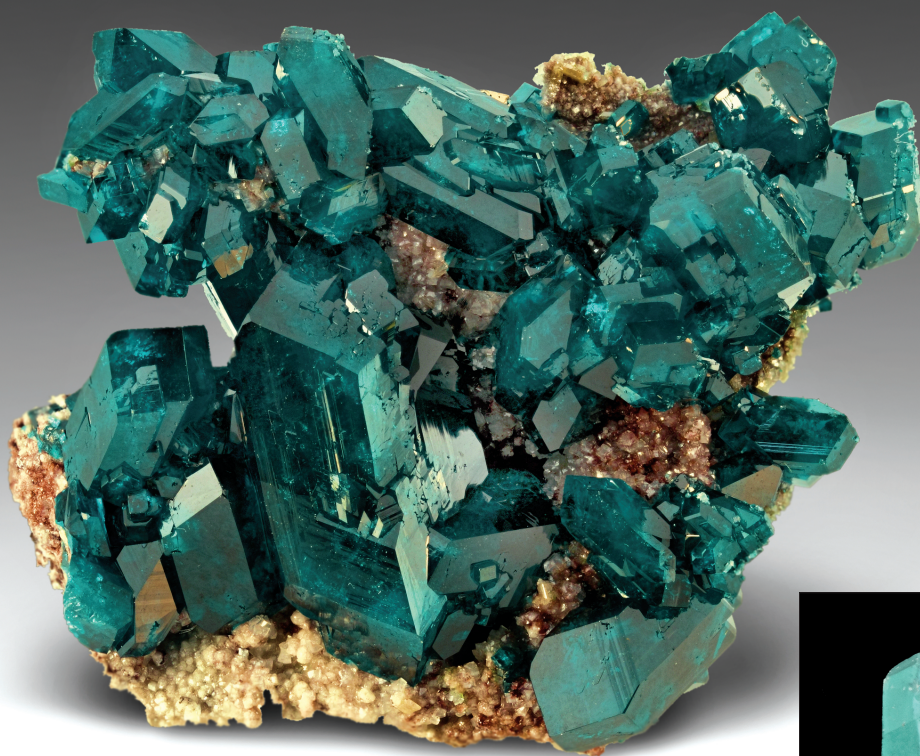
Above left: Diamond, 1.4 cm (18.10 carat), from the Premier mine, Cullinan, Pretoria, Gauteng Province, South Africa.
Above center: Diamond 1.5 cm (37.16 carat), from the Saha Republic, Eastern Siberian Region, Russia.
Above right: Diamond, 1.3 cm (7.04 carat twin), from Kimberley, Northern Cape Province, South Africa. Eugene and Sharon Cisneros photos.



Scheelite, 3 cm, from the No. 5 mine, Baia Sprie (Felsobanya), Maramures County, Romania. Eugene and Sharon Cisneros photograph.

Arsentsumebite on mimetite, 2.6 cm, from the Tsumeb mine, Tsumeb, Otjikoto Region, Namibia. Eugene and Sharon Cisneros photo.





Diopside, 4 cm, from the Tsumeb mine, Tsumeb, Otjikoto Region, Namibia. Eugene and Sharon Cisneros photo.



Phosphophyllite, 2.4 cm, from the Unificada mine, Cerro de Potosí, Potosí Department, Bolivia. Eugene and Sharon Cisneros photo.



Gold, 2 cm, from the Colorado Quartz mine, Mariposa County, California. Eugene and Sharon Cisneros photo.



Personally Collected Specimens

Andradite (var. melanite), 7.8 cm, from the Gem Mine District, Southern San Benito County, California. Eugene and Sharon Cisneros photo.

Epidote (twinned) with quartz, 5.5 cm (left) and 9.5 cm (right), from the Miracle Mountain mine, Calaveras County, California. Eugene and Sharon Cisneros photo.



Benitoite with joaquinite-(Ce), 3 mm, from Mina Numero Uno, Southern San Benito County, California. Eugene Cisneros photomicrograph.



Near right: Vesuvianite (var. cerium-rich), andradite (var. melanite) and clinocllore, 3 mm, from Perovskite Peak, Dallas Gem mine area, Southern San Benito County, California. Eugene Cisneros photo.

Far right: Neptunite, 1 mm, from Mina Numero Uno, Southern San Benito County, California. Eugene Cisneros photo.

